

LABORATORY FURNITURE MADE IN GERMANY



20
YEARS
2001 - 21



Wesemann – A Success Story

The Wesemann corporation was established in 1963 by Werner Wesemann in Syke near Bremen. Today Wesemann GmbH is managed by Robert and Frank Wesemann and is one of the leading manufacturers of laboratory furniture worldwide. Owing to the huge success of the products abroad the Wesemann family established Wesemann International GmbH together with Valentin Fischer in 2001. A strong partnership which is also to your benefit.

Quality does not know any borders.

Our philosophy is international.

As partner of Wesemann GmbH in Syke we have been supplying functional, durable and tried and tested laboratory furniture around the globe for many years. Customers confirm time and again that our products "Made in Germany" enjoy a good reputation. What's more, our international customers also benefit from our extensive experience and our in-depth industry knowledge.

In addition, we are able to act as a one-stop-shop, as with our Wesemann range of products we can completely cover the demanding fields of laboratory and school furniture. That way we can acquire the very best solution for you.

We have been doing this since 2018 with enhanced forces: with Florian Reischmann as a member of the management board the basis was established to meet the ever growing demand, and to put the future development on a solid foundation.

We make your daily laboratory routine safer and more comfortable. Today and tomorrow. Come and get to know us!



Valentin Fischer
Managing Partner



Florian Reischmann
Managing Partner



Know-how plus expertise.

Our formula for a perfect solution.



No matter whether you cooperate with a planning office for your building project or whether you fall back on internal resources: our team will support you in any phase of your project; frequently and right from the beginning of your planning stage, of course, because we know about the processes in a laboratory and the related user-specific requirements – ergonomics, optimization and routes, specific demands on materials, connections, fume cupboard tech-

nology, supply and disposal and much more have to be considered.

Our staff is highly qualified in the respective fields and has extensive expert knowledge. We would be pleased to discuss your project with you and provide you with advice about possible alterations or optimizations at an early stage already.

A solid basis for a functional laboratory.

We ensure a proper implementation.

To have our team revising and cost-accounting your planned laboratory furniture will protect you from unpleasant surprises.

We co-ordinate the interdisciplinary trades, take care of a smooth flow and have an eye on the completion of all

project phases in due course by means of precise schedules. As we are familiar with the cost structure in the field of laboratory construction from many years of experience in project engineering we are able to supply you with reliable figures very early on so that you are provided with a sound calculation basis.



Sustainability is dear to our heart.

We rely on certified partners.



Acting in an environmentally conscious and sustainable way is not seen as an option anymore. Instead, all of us have to contribute our fair share to go easy on precious resources. Although we have implemented these requirements within our organisation it is much more important for us, however, how the laboratory furniture we sell is being produced. Their production requires energy and raw materials, after all. The lower the consumption, the better.

Therefore Wesemann GmbH located in Syke and certified according to EMAS is an ideal partner for us. Together we are able to ensure that our complete range of products guarantees utmost conservation of resources.

EMAS – Resource saving environmental management.

The European environmental management system EMAS (Eco-Management and Audit Scheme) assists companies to save resources in a smart way and ensures that all environmental aspects – from energy consumption to waste disposal and emissions – will be implemented in a legally compliant and transparent way. Wesemann has adapted all operational procedures to the requirements of EMAS and has been certified according to ISO 14001.



Four fields of action for the environment.

The EMAS system includes the four fields of action „Material use and protection of resources“, „Waste disposal and recycling“, „Energy and emissions“ as well as „Ecological process optimization“.

Right in this sense Wesemann always tests innovations for their environmental compatibility. Suppliers have to use environmentally friendly techniques and materials and to also make proof of these. Within the company's workflow we are not only aware of environmental protection but also live up to it. For us it goes without saying that possibilities to conserve resources are going to be checked ever and ever again, just like the avoidance of emissions, waste and sewage, or the return of materials to the raw material cycle.

Producing and constructing in an environmental friendly way.

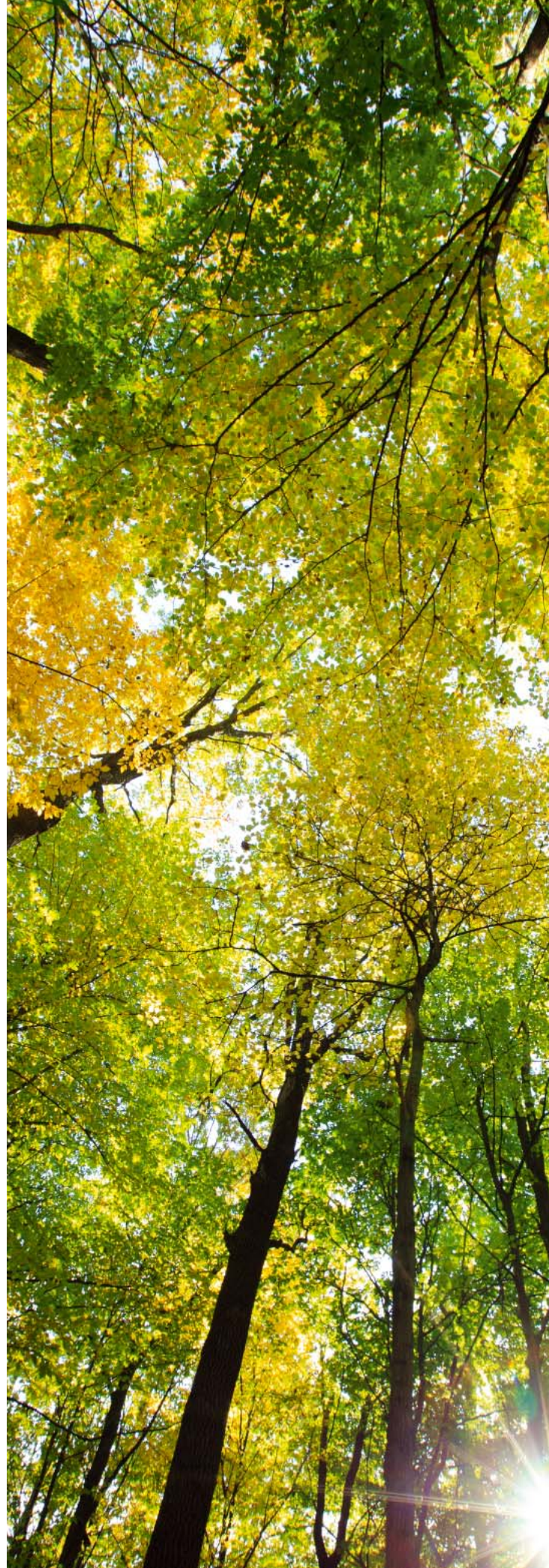
Processing of furniture at Wesemann is made by using PEFC certified wood. That way the wood production chain can be continuously documented. From the forestry operation in the industrial forest to processing, all suppliers are certified, thus ensuring a completely closed chain of custody (CoC).

And also with regard to the strict LEED regulations for sustainable constructions the Wesemann range of products provides an important contribution for their fulfillment.

Products with an environmental label.

Corresponding to the certifications Wesemann is the first laboratory furniture manufacturer whose products are furnished with the verified environmental product declarations (EPD). An EPD provides information on the product components and their environmental effects which may occur during the overall life cycle of a product. It contains information about arising greenhouse gas emissions, energy consumption, emissions to the air, the soil and water, as well as water consumption and waste generation.

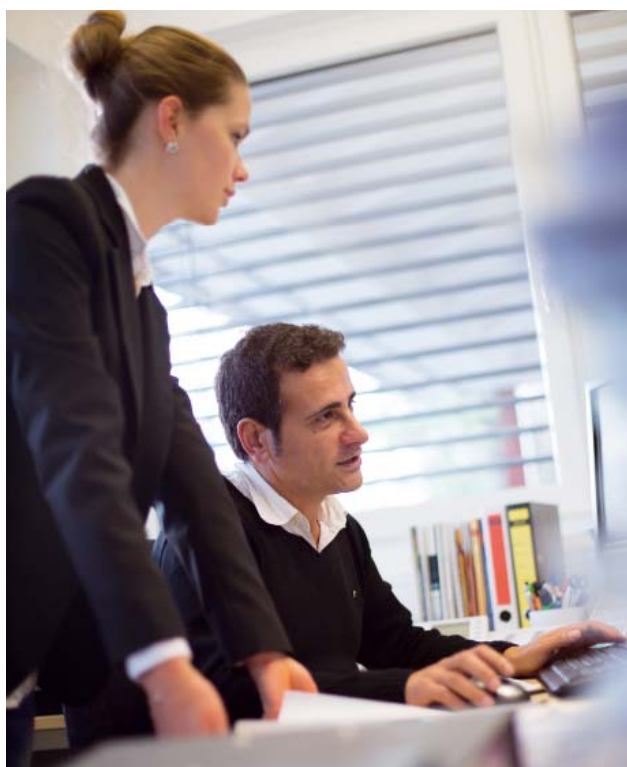
Therefore we are pleased to be able to offer you a range of products completely in harmony with the environment.





Customised solutions.

For the laboratories of this world.



Wesemann's laboratory furniture systems and furniture for scientific classrooms offer a high-class and robust product quality which is designed for an utmost economic life – without limits regarding the freedom of design of the furniture systems.

Every piece of furniture is customised for the respective customer and his needs – be it a research institute, an industrial corporation, a university or an educational facility.

System DELTA 30

Furniture systems

Wesemann's product lines are characterized by their utmost adaptability and ground-breaking technology. System DELTA 30 enables, for example, an almost unlimited number of combinations. This system can also be ideally adapted to changing room conditions. In addition there are well thought-out detailed solutions such as service ducts in which all required services may be located and are thus ready to be connected at any time.

Utmost flexibility in the laboratory is also the subject of LAB-terminal. This furniture system has been awarded with the red dot and the iF Design Award in 2013 and is ground-breaking with regard to versatility and mobility.



System DELTA 30

Fume cupboards systems

One of the most important pieces of safety equipment in laboratories is the fume cupboard. Therefore, the requirements defined for this device are based on EN 14175.

To comply with the safety function, and thus the preservation of safety, the exhaust airflow is an important criteria. The containment (airborne contaminants) inside the fume cupboard, and the resistance to external airflows, that could interfere with the fume cupboard, is strongly dependent on the fume cupboard volume. The further the sash is opened, the stronger the containment of the fume cupboard is impaired.

Based on these considerations the EN 14175 standard not only requires the static but also the dynamic behaviour as proof

for the robustness testing. Here, disturbing motions are created near the fume cupboard to evaluate the stability of the air intake and the containment potential of the fume cupboard. Prior to serial production each fume cupboard is extensively tested at our in-house testing laboratory.

The Delta 30 fume cupboards meet the requirements stipulated by EN 14175 in full extent with exceptional values. The exhaust system has optimized extraction zones in the rear panel, which are very easy to detach for cleaning purposes, ensuring ideal airflow and ventilation. The fume cupboard interior offers a large useable area. There are no constructional and distracting built-in components. Ideal utilization and maximum safety at work are the benchmark factors for our fume cupboards.

Our range:

- Bench-mounted fume cupboard
- Low ceiling bench-mounted fume cupboard
- Low level fume cupboard
- Walk-in fume cupboard
- Filter fume cupboard
- Radio-isotope fume cupboard
- Special application fume cupboard
- DELTAcare fume cupboard
- Explosion-proof fume cupboard



System DELTA 30

DELTAguard

There are only few manufacturers who have such an extensive experience in producing laboratory fume cupboard systems as in the case of Wesemann.

Many years ago we already started with our own developments and have continuously been improving the systems

ever since, which many users all over the world are benefiting from today - an enormous effectiveness. With regard to containment of pollutants, robustness against outside airflows and fume cupboard volumes Wesemann's fume cupboard systems achieve excellent data.



System DELTA 30

DELTAguard PROTECT

Higher energy efficiency – lower operating costs.
Sustainability that pays off.

Equipped with the advanced technology PROTECT fume cupboards use 33 % less air than conventional fume cupboards for safe operation, and thus enable an even more cost-effective laboratory operation. Thus, the investment is amortised with the PROTECT system, just by the savings in energy costs (supply air flow rate) and the investment costs for a smaller scale building ventilation system within a short time. For the supply air injection, we rely on innovative DC fan technology. DC fans consume significantly less energy, operate very quietly, and at the same time generate less heat than traditional AC fans. The PROTECT fume cupboard system, with active flow technology support increases the

protection level, making it one of the world's safest, and at the same time most economical laboratory fume cupboards.

These fume cupboards are available as PROTECT models with active flow technology support:

- Bench-mounted fume cupboard
- Low ceiling bench-mounted fume cupboard
- Low level fume cupboard
- DELTAcare fume cupboard



LABOdacta

Working centrally – learning in the team.

Classic furniture for scientific classrooms

Apart from the demanding laboratory furniture construction well thought-out furniture for scientific classrooms has been one of Wesemann's core businesses since many years. This programme range is known on the market under the name of LABOdacta and comprises a wide range of different desk

types and systems for the supply of services. Due to its modular construction LABOdacta is designed for all kinds of room requirements and specialized requirements and meets the highest quality standards.

Desk systems/Students-Energy columns



LABOdacta

Service rails – Perfect ergonomics at the place of learning.

Wesemann service rails combine safety with an ideal utilization of the room: When in passive state they are attached to the ceiling in a space-saving way whereas they can centrally be activated by the teacher to be used during class. That way they directly provide the required energy and data sockets at the place of learning and are thus protected against manipulations and vandalism by students.

Service rail

Multifunctional classes require flexibility also with regard to the arrangement of the furniture. With the LABOdacta service rails Wesemann has developed a solution which best meets the requirements regarding modern learning.



ERGOLine service rail

With the ERGOLine service rail schools are able to create highly ergonomic places of learning. The slim and robust lifting arm compactly comprises all connections. It swivels from the ceiling downward and directly provides the required energy and data sockets precisely at the place of learning.



DELTAGuard Universal Demonstration Fume Cupboard

The mobile „DELTAGuard Uni-Demo“ is a full-fledged fume cupboard for demonstration of experiments. The side for demonstrations is made by a convex-shaped safety glass to ensure an optimum security for the user. The „DELTAGuard Uni-Demo“ can be used with all options at each docking station in different rooms. The „DELTAGuard Uni-Demo“ is available in stationary and mobile version.



DELTA30 and LABOdacta

Production with state-of-the-art technology.





At Wesemann's production facilities the complete product range is produced according to state-of-the-art production methods in an extraordinary diversity. That way not only the most different requirements on colour or quality can be implemented but also on functionality like e.g. electrically conductive surfaces for explosion protection.

This is the way any furniture is customised for its individual use – with more than 50 years of experience in serial production.

THE PIONEERING LABORATORY

IN A CONTAINER OR AS A MODULAR DESIGN

A flexible solution for all kinds of requirements.

What can be done if relocation or renovation is ahead? If laboratories are required only temporary at different locations? Or if there is simply not enough time to furnish a stationary and permanent laboratory? In all of the above cases Wesemann International mobile laboratory concepts are the ideal solution to react quickly and flexibly.

Quality Made in Germany.

We plan and implement these mobile solutions in cooperation with competent partners. Customized for the respective purpose on site and ready for use in excellent quality made in Germany.



„Apart from the investment costs the time factor is of increasing importance when building a laboratory. Every day research and development could be started earlier means money saved.

Against this background we pushed ahead the development of ready-to-be-used laboratory solutions either in a modular design or in containers. These are the ideal solutions whenever time is money.“

Valentin Fischer
Managing Partner





Container design. Completely pre-assembled.

„Plug & Play“ – that’s the way you could describe the purpose of the laboratory container, as no room shape can be set up and removed any quicker. Designed for transportation on ships and land-based vehicles these compact containers fit perfectly to the size of sea containers.

Quickly ready for use.

On the contrary to the laboratories in modular design the containers are completely equipped in the factory already and are ready for use in short time. As they do not require a permanent location they are perfect for a mobile use in the on-shore oil production or gas extraction industries, but also as a laboratory for quality assurance in production areas like biotech, and industrial or pharmaceutical corporations.



Modular design.

Quick. Easy. Modular.

Laboratories built in a modular design may be used as either interim or permanent solutions thanks to their solid construction – either way their set-up saves a lot of time: whenever the modules arrive on site the complete periphery – from doors to windows and walls, as well as floor covers – are already installed.

High level of pre-fabrication.

The modules of a size of 30 to 40 sqm are pre-fabricated to 90% in Germany according to approved and tested standardized processes – under ideal production conditions. The remaining 10% will be installed by skilled and experienced technicians on site.



„In Kuantan / Malaysia, we implemented a laboratory building of 700 m² together with an efficient manufacturer of construction modules within just three months. A total of 20 room modules with an individual weight of up to 20 tons were transported to the site on road and sea and arrived at the beginning of January 2016. Already in mid-April 2016, they could start their production.“

Florian Reischmann

Managing Partner
and Project Manager





Flexible planning – quicker realisation.

A way to save between 30 and 50 % of construction time.

With **Wesemann International GmbH** you will benefit of a complete package including everything from planning and project engineering to commissioning. Our experienced installation teams professionally and quickly prepare the pre-installed laboratory modules or containers on site. That way the installation time is reduced to just a couple of weeks, which also reduces the overall construction time for up to 50 %! By the way: apart from workspaces also offices and social areas may be part of the module or the container structure.

The module adapts.

At the production facilities in Germany every container is individually prepared for both its tasks and its final place of use. The equipment and the installed elements of course correspond to the latest norms and standards – for example to the new energy saving regulations.



Excellent all-inclusive support.

With Wesemann International you make use of pioneering laboratory technology – worldwide.



We know what is needed to be able to commission your laboratory or your scientific classroom in time. Therefore we provide an all-inclusive support package for you right from the entry of the order to the selection of the most economic transport route, and from monitoring the production process to installation and commissioning.

Furthermore Wesemann International GmbH is also your partner for the expansion of an existing facility, or for replacement needs, as well as for maintenance and service. In other words: We are pleased to be at your service whenever you need us.

Working in safety.

We accompany your project until commissioning and beyond.

By commissioning your laboratory furniture our service will by no means be finished. Together with a network of highly specialized service professionals we take over and coordinate all kinds of tasks and services to ensure smooth functioning and safety for your laboratory.

Regular service and maintenance works.

Regular service and maintenance works are an indispensable basis for safe laboratory operations. But there is more to it, however: the life cycle of your laboratory furniture is increased, costs are predictable and risks of default are minimized. An important maintenance element is the safety inspection of hazardous materials cabinets according to statutory provisions, as well as inspections of the fume cupboards. Our experts regularly execute these tasks within the

scope of a maintenance contract and also take care of the obliging documentation. That way, you are on the safe side.

Maintenance of your laboratory furniture according to DIN 31051 by our experts not only contributes to the proper functioning of operational safety. Owing to the documented works you also secure your limitation of liability if need be.

Staff members learn safety.

Apart from the service and maintenance works by our technicians we designed a programme to prepare your staff members for occupational safety issues. That includes well thought out occupational safety concepts and hands-on expert knowledge trainings. Schedule a meeting for your team!



Quality speaks for itself.

Satisfied customers are the best evidence of performance.



"We have come to appreciate the professionalism of the entire team, from the support in the planning phase to the on-schedule installation of the complete laboratory furniture with a total area of more than 6,400 m². The quality of the furniture and fume cupboards is really impressive and has totally met our high demands.

A huge compliment to the Wesemann International team!"

Dr. Nikolaus F. Rentschler
Managing Partner
Rentschler Biopharma SE

References laboratory furniture.

Set the standards everywhere – a selection of our references.



BASF Chemicals, Mumbai, India



Boehringer, Q-Building + LSCC, Vienna Austria



EPFL, Lausanne, Switzerland



Kordsa, Istanbul, Turkey



KRKA Novo Mesto, Slovenia



Spimaco, Saudi Arabia



Jussieu Est Campus, Paris, France



Acibadem, Istanbul, Turkey



Medical University, Graz, Austria



Institute for organic Synthesis Latvia



Nestle, Zimbabwe



International Atomic Energy Agency Seibersdorf, Austria



BASF, Shanghai, China



IST Austria Life Science Facilities, Klosterneuburg, Austria



L'Oréal, Shanghai, China



Sabanci University, Istanbul, Turkey



Merck & Cie Laboratory Building C, Schaffhausen, Switzerland



Najran University, Saudi-Arabia



GTIIT, China



Gendarmerie Royale, Rabat, Morocco



List, Luxembourg



Petro Rabigh, Saudi Arabia



ENI AGIP, Kazakhstan



Petru Poni, Romania

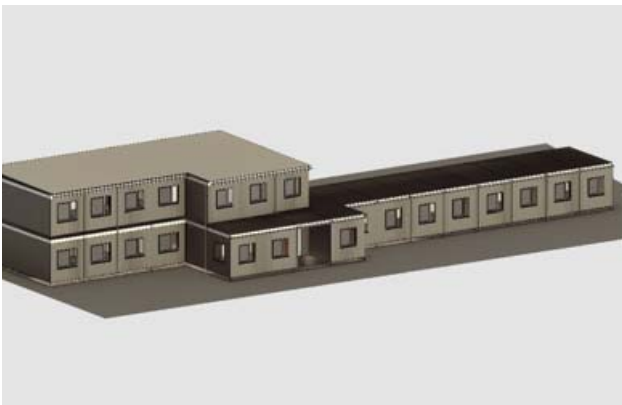
References of turnkey laboratory buildings in modular construction



Petronas Chemicals, Malaysia



Rentschler Laupheim, Germany



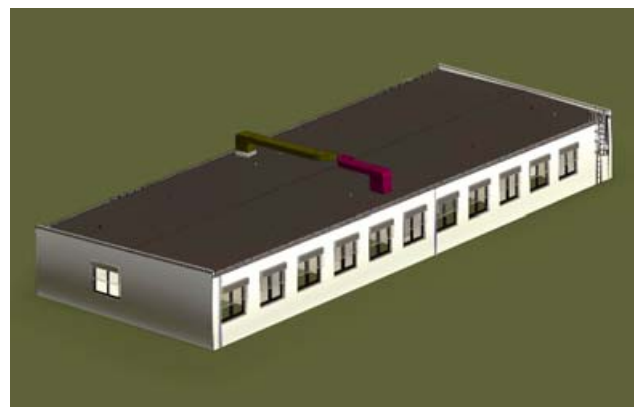
Takeda, Vienna, Austria



Johnson Matthey, Emmerich, Germany



BASF Ludwigshafen, Germany



Sabic, Gelsenkirchen, Germany



Wesemann International GmbH

Sigmanser Weg 31
88239 Wangen im Allgäu
Germany

Phone: +49 (0) 75 22 99 981-0
Telefax: +49 (0) 75 22 99 981-10
E-Mail: info@wesemann-international.com

www.wesemann-international.com



Wesemann Austria GmbH

Campus 21, Liebermannstraße F05 302-5
2345 Brunn am Gebirge
Austria

Phone: +43 664 221 34 11
E-Mail: info@wesemann-international.com

www.wesemann-austria.at

